

# Facilitating the Circulation of Reclaimed Building Elements in North West Europe

Main results (so far)

*Gaspard Geerts (Rotor)*



# Rotor



Assistance to building owners



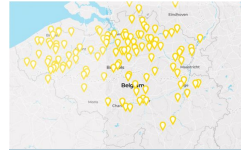
Design



Exhibitions



Education, workshops



R&D to foster reuse



Non-profit organisation  
Since 2005  
~12 people  
<https://rotordb.org>

## **RotorDC**

Cooperative company  
Since 2016  
~20 people  
<https://rotordc.com>



Salvage



Materials cleaning



Stockholding



Shop

# Interreg NWE and the FCRBE project



## Programme priority 3

Resource and materials efficiency

### Objective

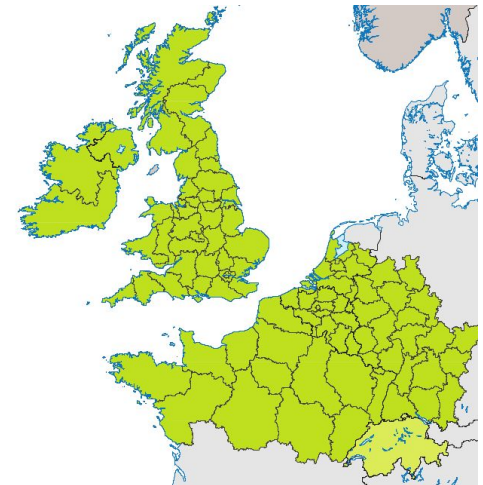
Increase by 150% the amount of materials being reclaimed and reused in NWE by 2032.

### Budget

Total = 6.1 M€

EU-funding (ERDF) = 3.6 M€ (60%)

Match-funding = 2.5 M€ (40%) (regional funding and partner's own funds)



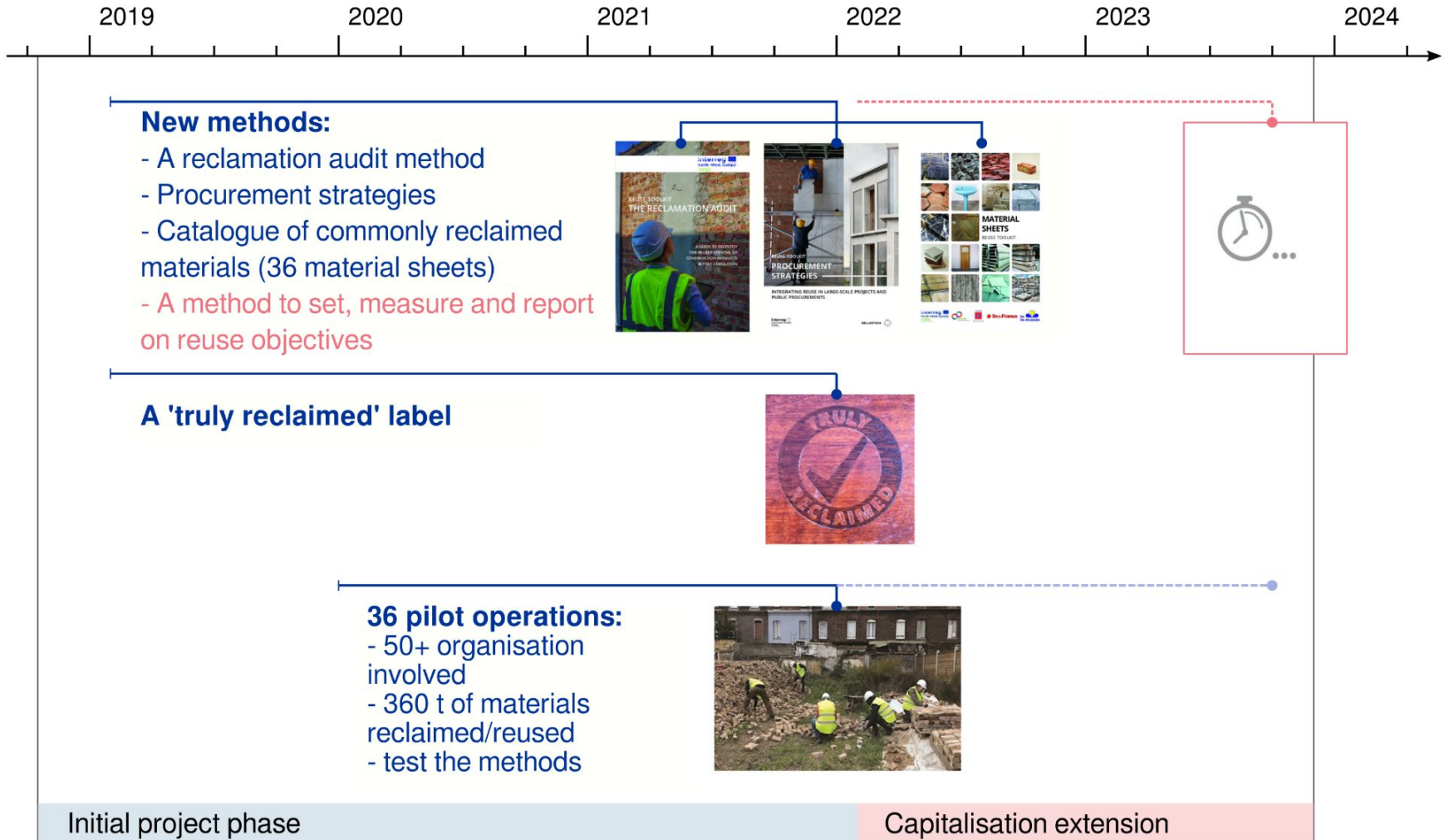
# Partnership



 Initial project phase

 Capitalisation extension

# Overview of main outcomes



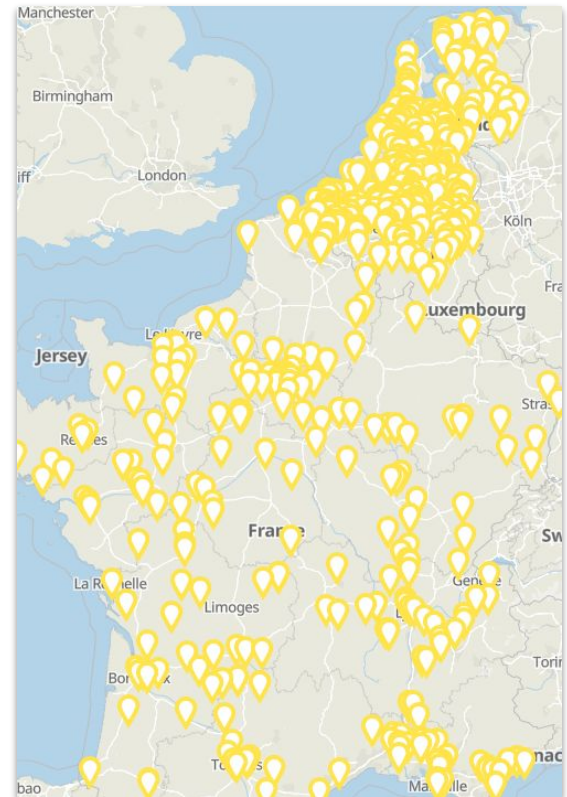
# Online directories of salvage dealers

Companies specialising in reclaimed building materials

1000+ entreprises documented on Opalis.eu and Salvoweb.com 'Futureuse 500 UK&Ireland'





**SALVO**

**OPALIS** 



Photos : Opalis.eu

# Statistical analysis of the trade

	Sample size	Total number of enterprises
	100	344
	44	125
	68	250
	78	988
<b>Total</b>	<b>290</b>	<b>1.707</b>

*Enterprises dealing in salvaged and reclaimed building materials in NWE.*



Turnover

**511,3 M€**



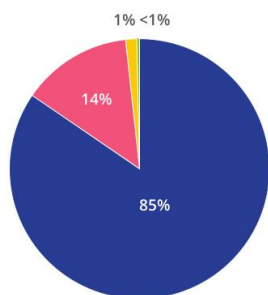
Employment

**6.940 ETP**



Material stock\*

**615.900 tonnes**



99 % of these companies are either **micro (85%)** or **small (14%)**.

\* This figure is a snapshot of the stock at a given moment. It does not factor in the renewal of the stock (i.e. actual material flows)

# Truly reclaimed label

To attest the genuinely reclaimed origin of the materials  
(in contrast with fakely aged new materials).

Soft launched during the FCRBE project.

→ <https://trulyreclaimed.org>





# Reclamation audit method

Identify the potential of the materials present in a building scheduled for demolition to be salvaged or reclaimed for reuse.

- + A report on how digital tools can support such audits.

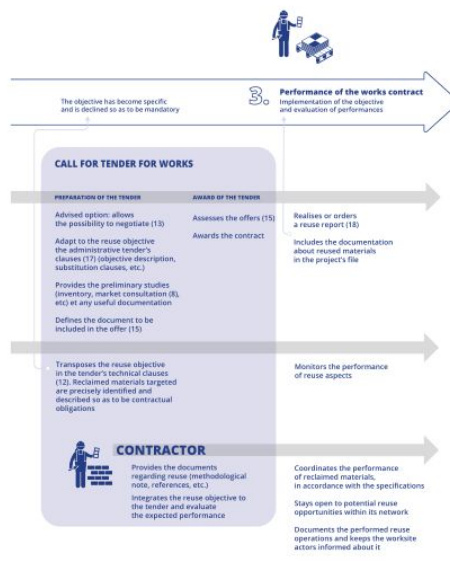
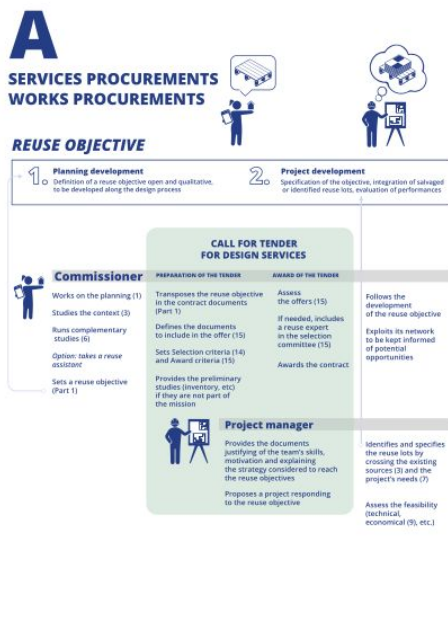


Photos : Buildwise for FCRBE



# Reuse in tendering procedures

5 step-by-step pathways to integrate reuse objectives into (public) tendering procedures.

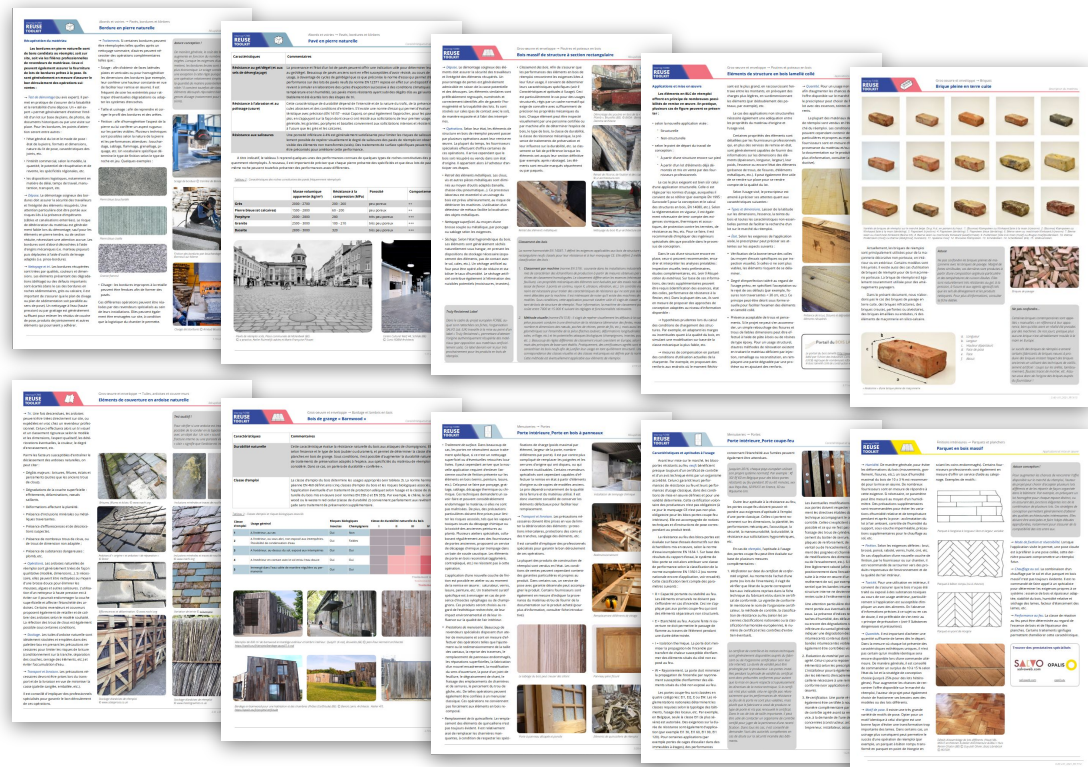


# Catalogue of 36 material sheets

For each sheet:

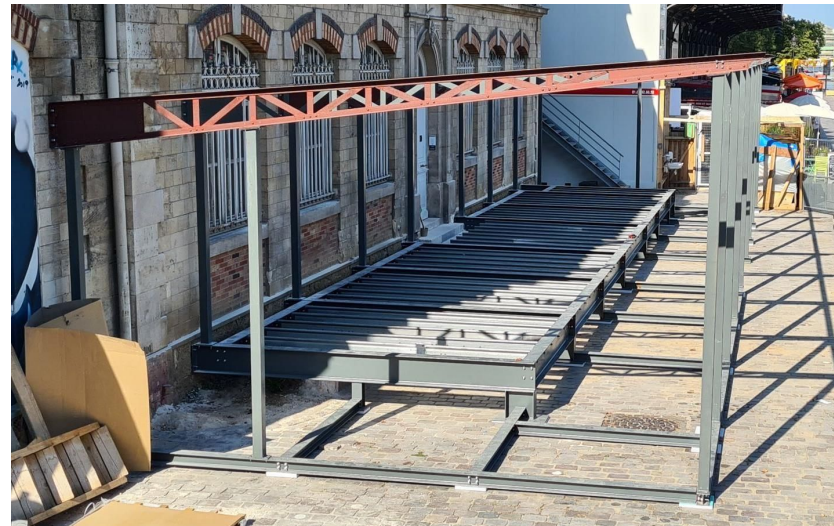
- Description
- Reclamation
- Reuse
- Known characteristics
- Availability
- Indicative prices

An introductory sheet addressing most frequently asked questions (insurance, fitness for use, etc.).



# 36 pilot operations

- Test newly-developed methods in ongoing projects
- Introduce +50 building professionals to salvage and reuse.
- Reclaim and reuse +360 t of materials.
- Share insights and findings from the field.

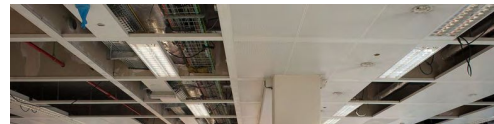


# And also...

Documentation, mobile exhibition, workshops, a symposium, a policy brief, diverse reports on reuse and environmental benefits...

## Presenting the **FutuReuse** booklet series

7 short introductions to longer topics in reuse



## A roadmap to foster reuse practices in the construction sector

A collection of inspiring actions for public authorities



# Ongoing work (capitalisation extension)



## 1- New target groups

Documentation targeting specialised building trades.

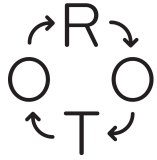
Sustained dialogue with insurance companies (and related organisations) to compile good practice.

## 2- New methods

A method to set, monitor and report on (quantitative) reuse targets, including a analysis of the reached reuse rates in 32 projects.

## 3- Spread the word

Communication and dissemination.



Visit us at  
<http://www.nweurope.eu/fcrbe>

**Gaspard Geerts (Rotor)**

<https://rotordb.org>

